



ANTIOCH SCHOOL DISTRICT 34

Inspiring personal excellence.

2018-2019 District NWEA Winter Update

Adam Sax

Administrator for Integration of
Teaching, Learning and Technology

Kristina Guntharp

Director of Teaching and Learning

Sara Elfering

Coordinator for Teaching and Learning



D34 Strategic Plan



ANTIOCH SCHOOL DISTRICT 34
Inspiring personal excellence.

Strategic Plan 2015-2020

MISSION

To inspire a passion for learning that empowers all students to achieve *personal excellence*

VISION

Students will achieve *personal excellence* when everyone demonstrates:

- Commitment to continuous improvement
- High expectations for academic, social, emotional and behavioral growth
- Effective collaboration, communication, critical thinking and creativity
- Ownership, responsibility and accountability for growth and development

GOALS

- Continuous Student Growth & Achievement
- Supportive Learning Environment
- High Quality Workforce
- Family and Community Partnerships
- Efficient and Effective Use of Resources

CORE VALUES/COMMITMENTS

We believe students learn in **different ways and at different rates.**

We believe it is our responsibility to guide students towards **self-sufficiency, ownership, responsibility and accountability** for their own learning.

We believe in providing a **safe and secure environment** in order to foster a community of collaborative learners.

We value **continuous improvement through teamwork, collaboration and shared leadership** at all levels.

We believe a **high quality staff** is essential to a high-achieving school system.

We believe that **corroborative partnerships and effective communication** among the community, home and school accelerates student success.

We believe the District must be a **good steward** of community resources.

Continuous
Student
Growth &
Achievement

**Antioch
School District 34**

964 Spafford Street
Antioch, IL 60002
847-838-8401

**Antioch
Elementary School**

817 N. Main Street
Antioch, IL 60002
847-838-8901

**Hillcrest
Elementary School**

433 E. Depot Street
Antioch, IL 60002
847-838-8001

**Oakland
Elementary School**

818 E. Grass Lake Road
Lake Villa, IL 60046
847-838-8601

**W.C. Petty
Elementary School**

850 Highview Drive
Antioch, IL 60002
847-838-8101

**Antioch Upper
Grade School**

800 Highview Drive
Antioch, IL 60002
847-838-8301

www.antioch34.com

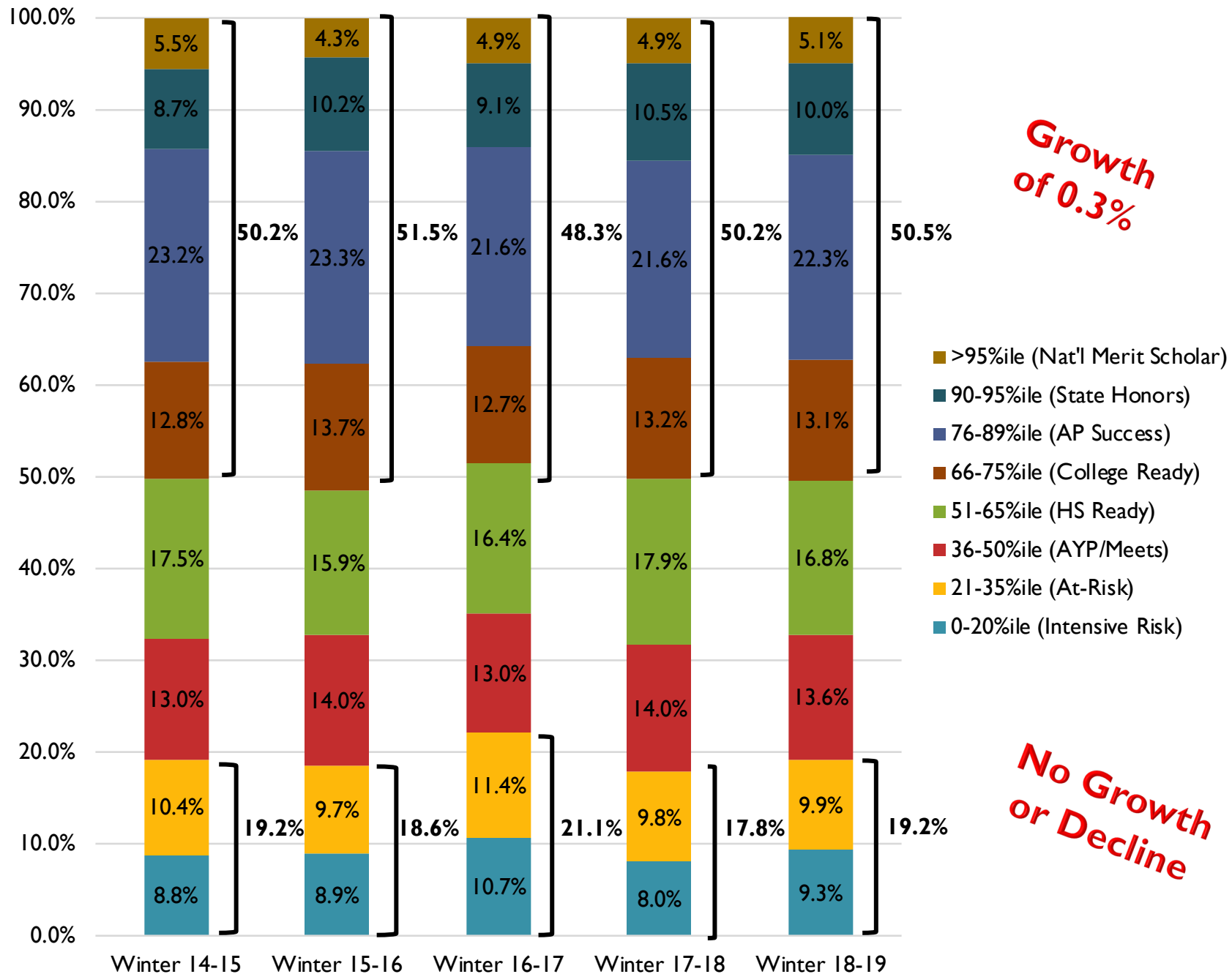
Terminology

- NWEA – Northwest Educational Measurement Association company that publishes MAP
- MAP – Measures of Academic Progress test which is given two to three times a year via a computer. The test is dynamic, As a student responds to questions, the test responds to the student, adjusting up or down in difficulty.
- RIT – Unit of measure for MAP assessment, the score
- Conditional Growth Index - normative growth metric. It is a standardized measure of observed student or school growth compared to the 2015 NWEA student or school growth norms.

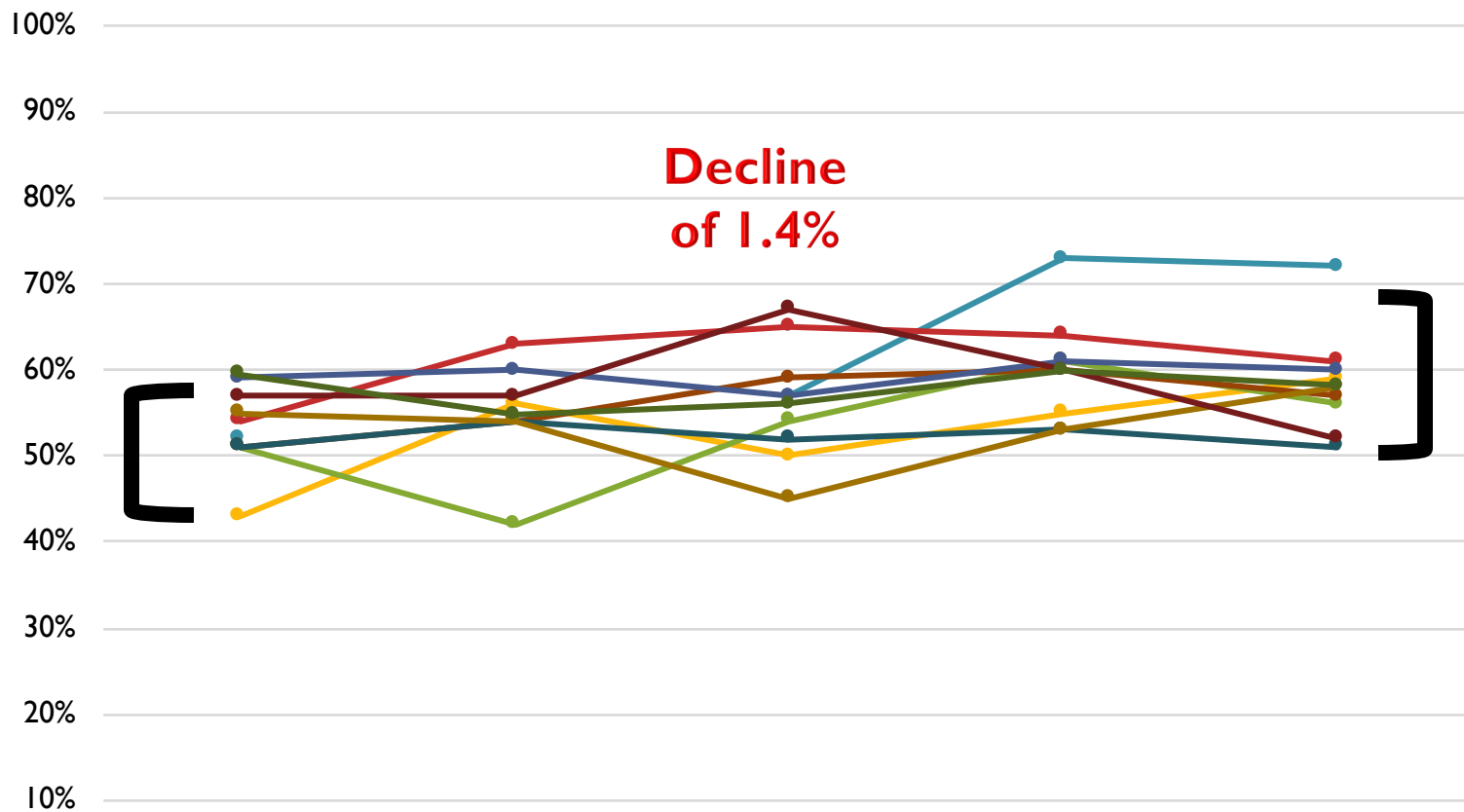


READING

NWEA MAP Winter Reading %ile Distribution

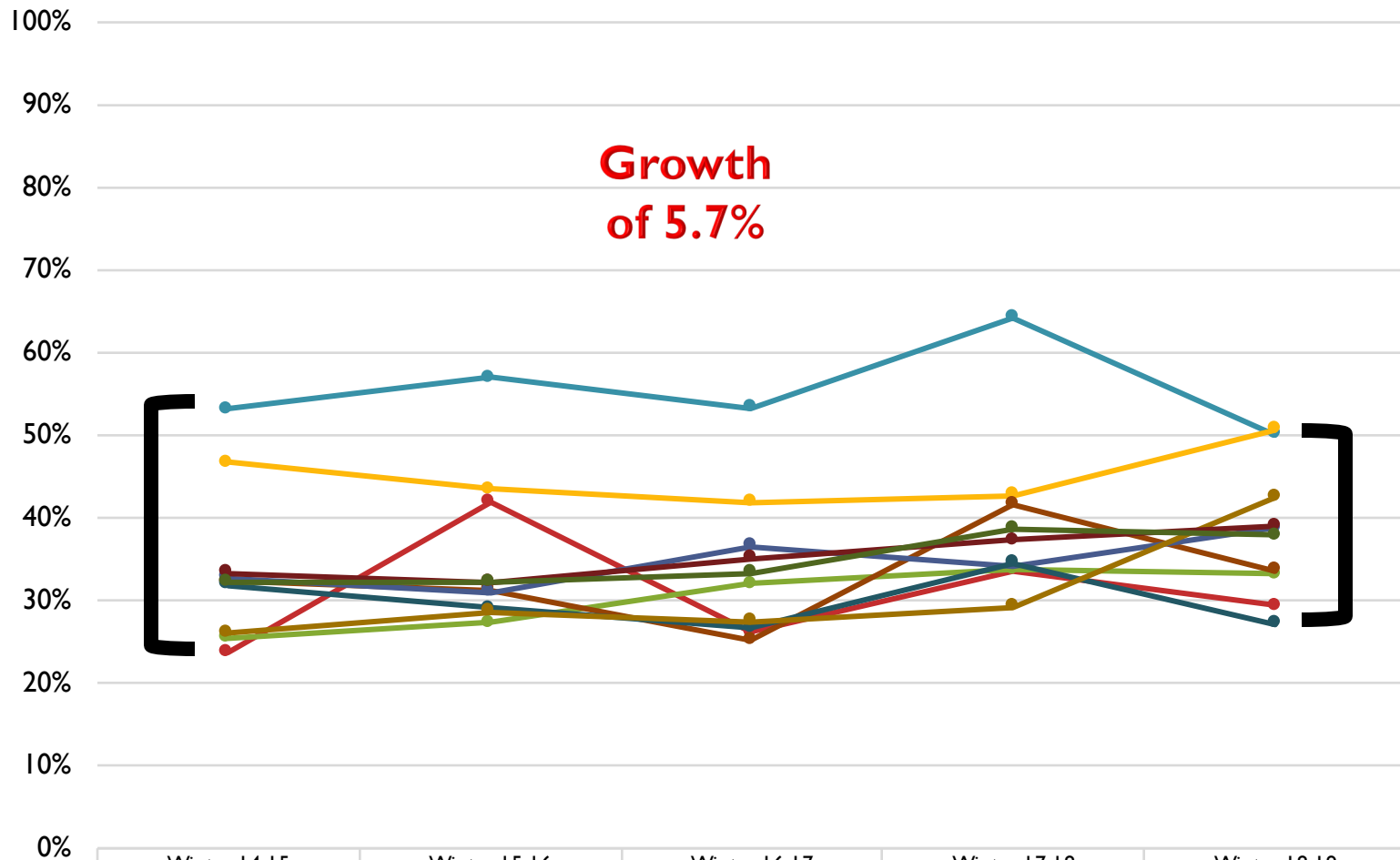


NWEA MAP Winter Reading Percent of Students Meeting Growth Targets



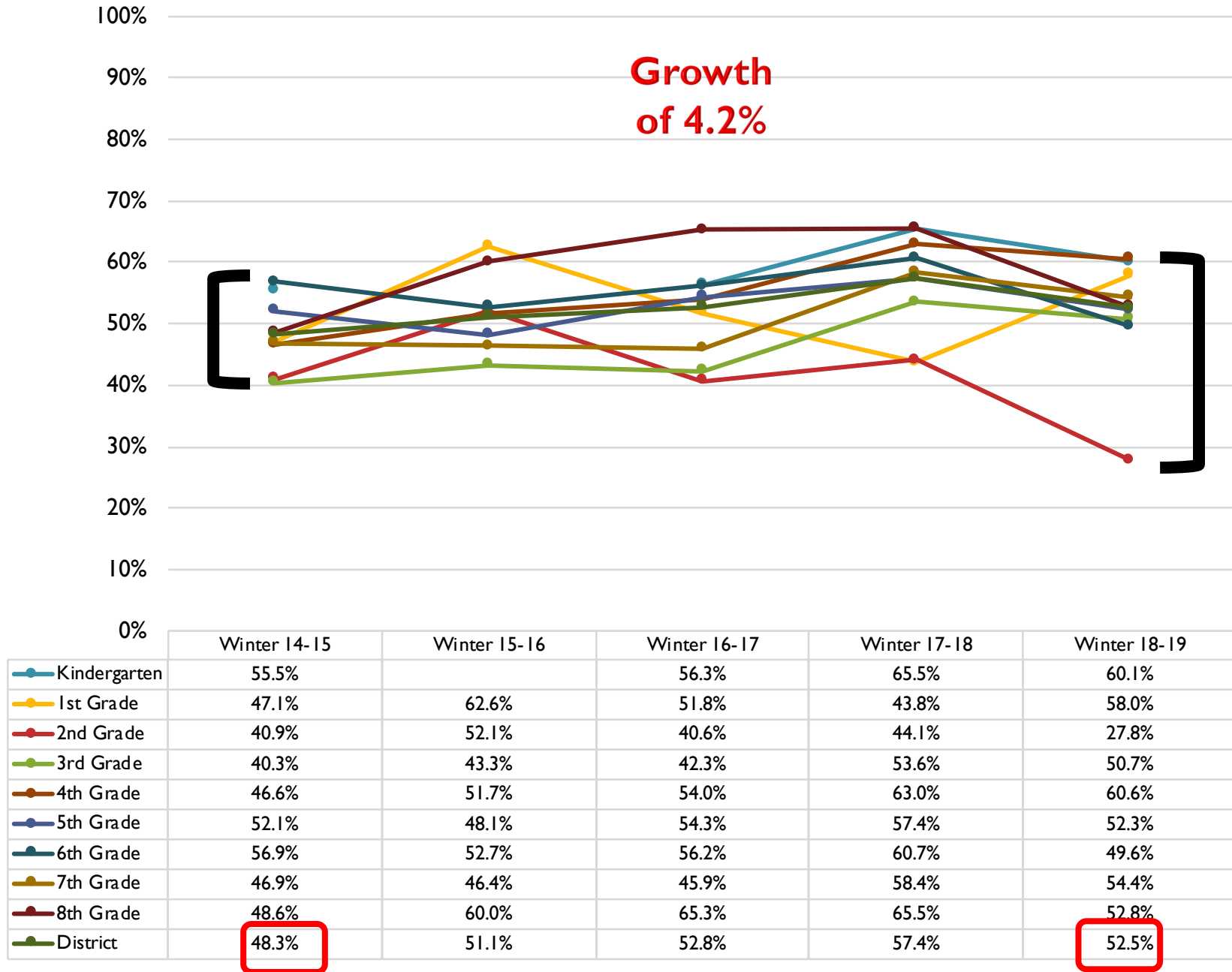
	Winter 14-15	Winter 15-16	Winter 16-17	Winter 17-18	Winter 18-19
Kindergarten	52%	*	57%	73%	72.0%
1st Grade	43%	56%	50%	55%	59.0%
2nd Grade	54%	63%	65%	64%	61.0%
3rd Grade	51%	42%	54%	61%	56.0%
4th Grade	51%	54%	59%	60%	57.0%
5th Grade	59%	60%	57%	61%	60.0%
6th Grade	51%	54%	52%	53%	51.0%
7th Grade	55%	54%	45%	53%	58.0%
8th Grade	57%	57%	67%	60%	52.0%
District	59.5%	54.8%	56.0%	59.9%	58.1%

NWEA MAP Winter Reading IEP Average RIT Percentile



	Winter 14-15	Winter 15-16	Winter 16-17	Winter 17-18	Winter 18-19
Kindergarten	53.2%	57.0%	53.3%	64.2%	50.0%
1st Grade	46.7%	43.4%	41.8%	42.7%	50.6%
2nd Grade	23.7%	41.9%	26.2%	33.6%	29.3%
3rd Grade	25.4%	27.3%	32.0%	33.8%	33.2%
4th Grade	32.3%	31.2%	25.2%	41.6%	33.6%
5th Grade	32.7%	30.9%	36.5%	34.2%	38.8%
6th Grade	31.8%	29.1%	26.7%	34.5%	27.2%
7th Grade	26.1%	28.6%	27.4%	29.2%	42.5%
8th Grade	33.3%	32.2%	35.1%	37.3%	39.0%
District	32.2%	32.2%	33.4%	38.6%	37.9%

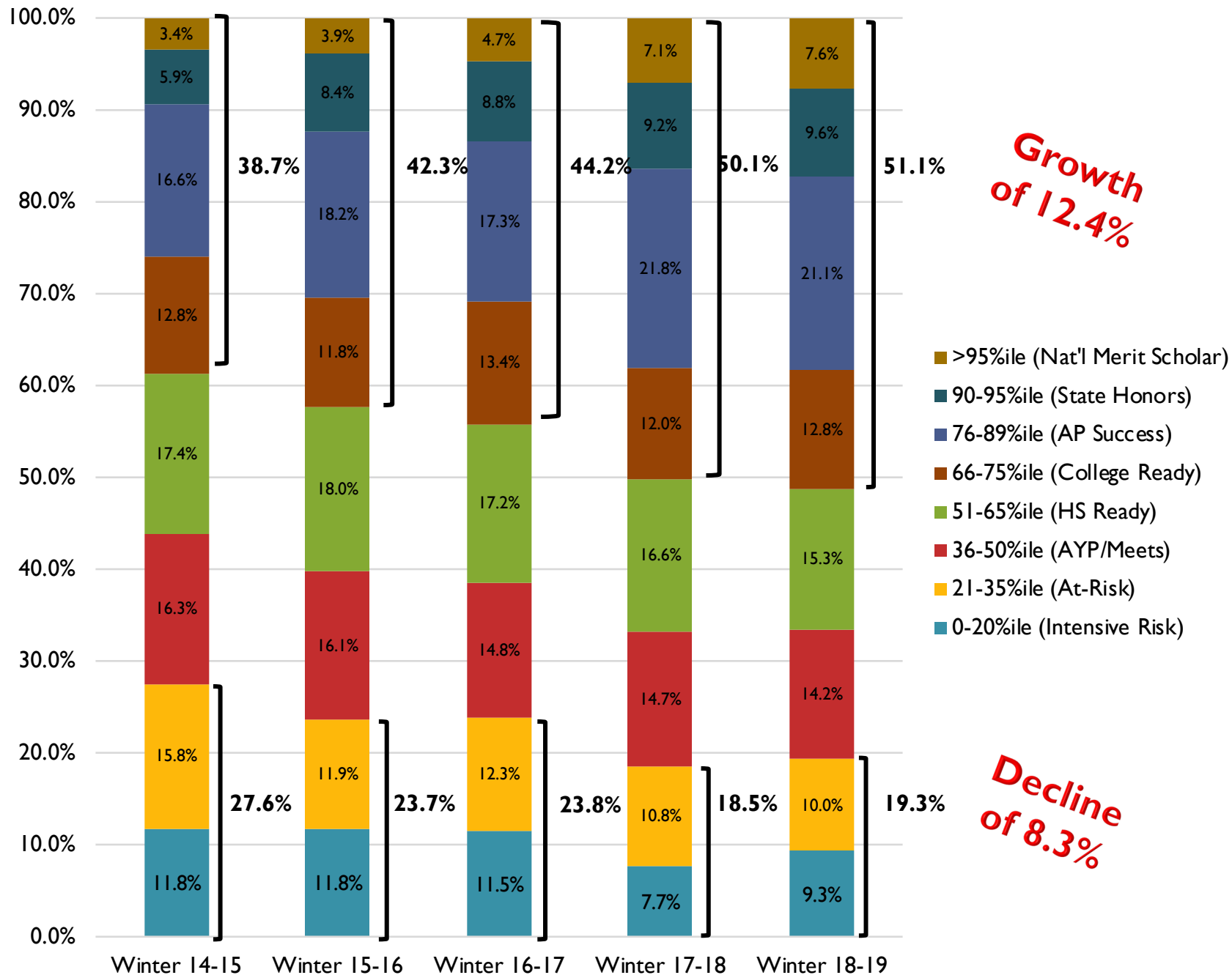
NWEA MAP Winter Reading IEP Conditional Growth Index Percentile by Grade Level



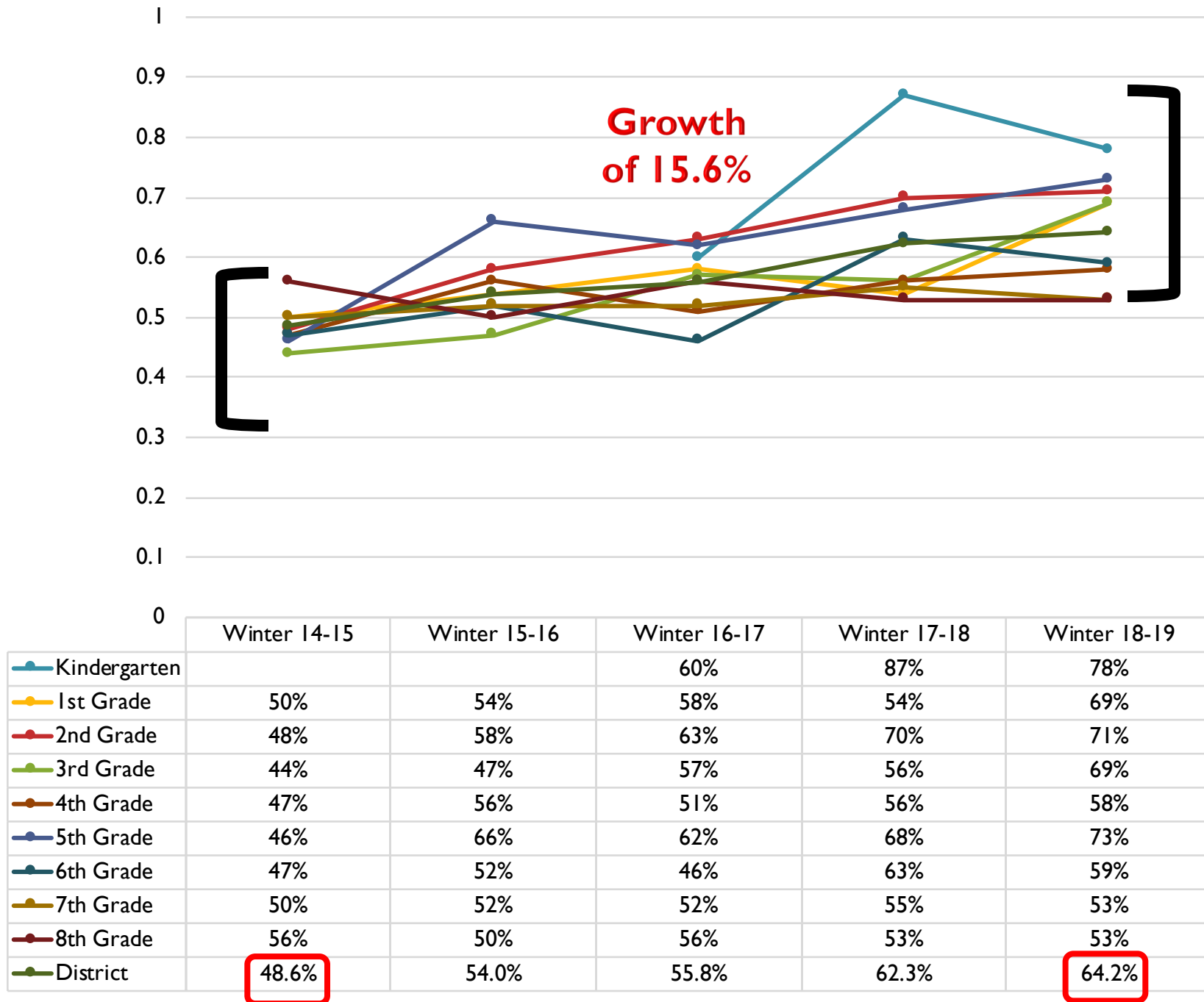


MATH

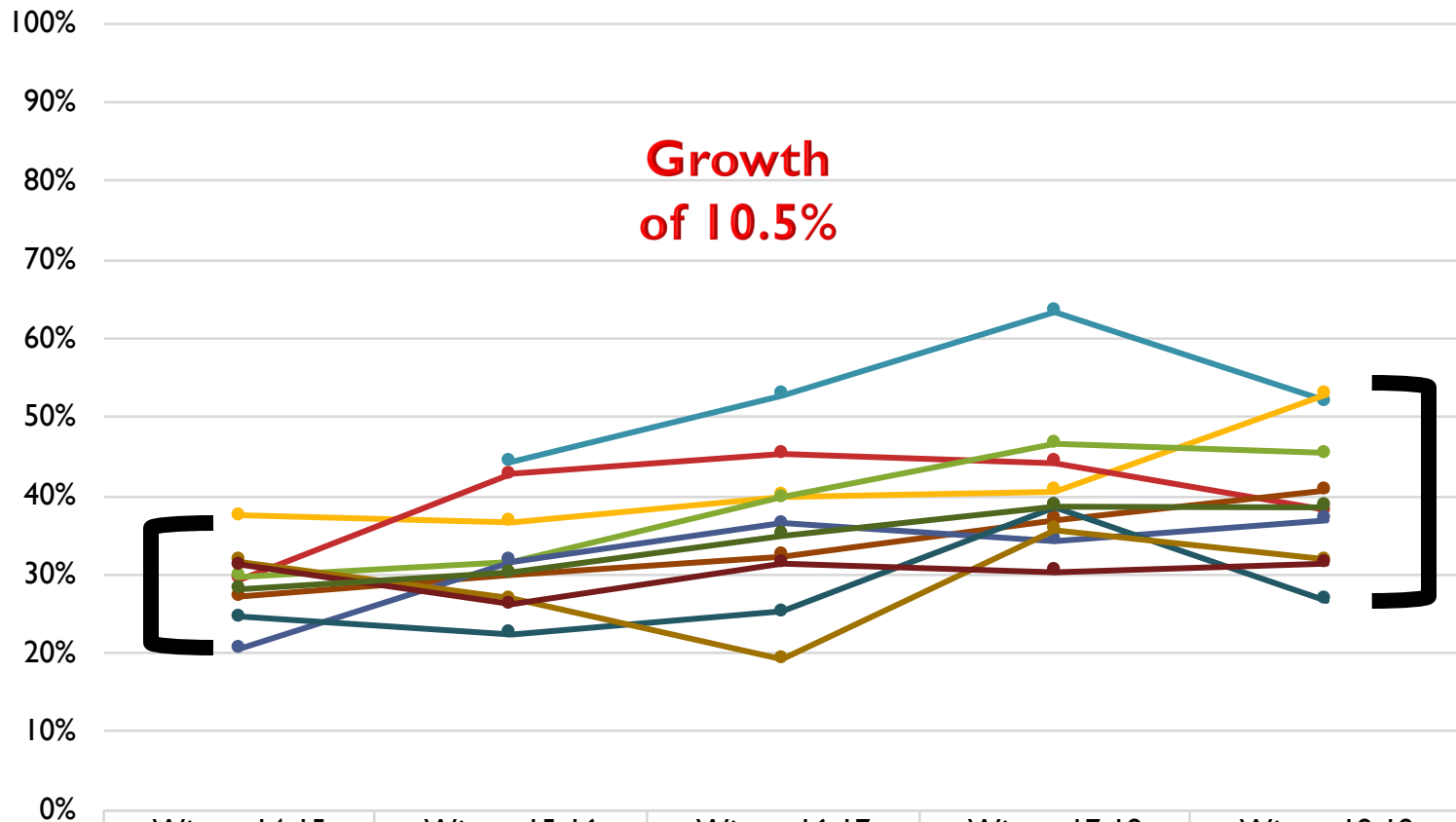
NWEA MAP Winter Mathematics %ile Distribution



NWEA MAP Winter Mathematics Percent of Students Meeting Growth Targets

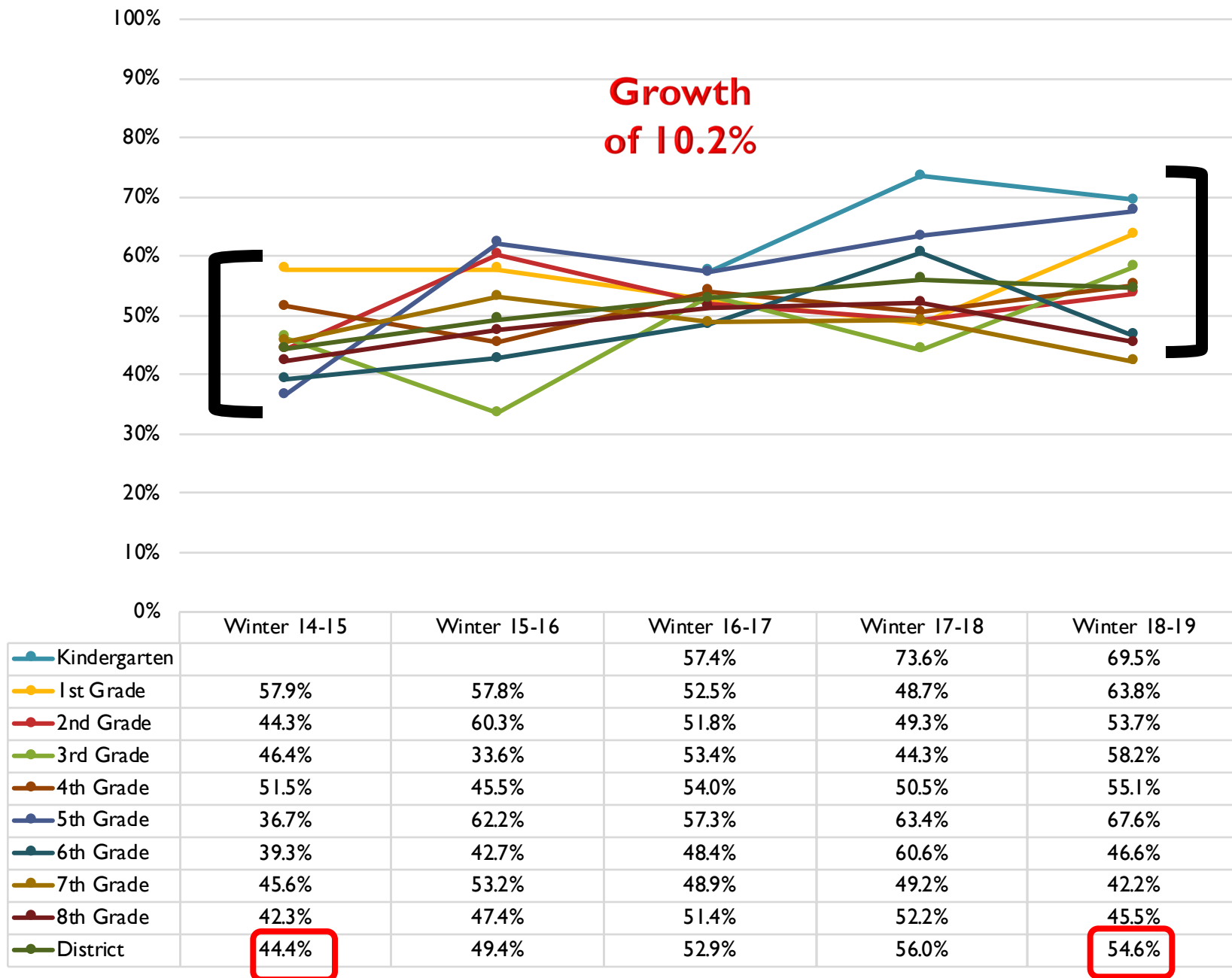


NWEA MAP Winter Mathematics IEP Average RIT Percentile

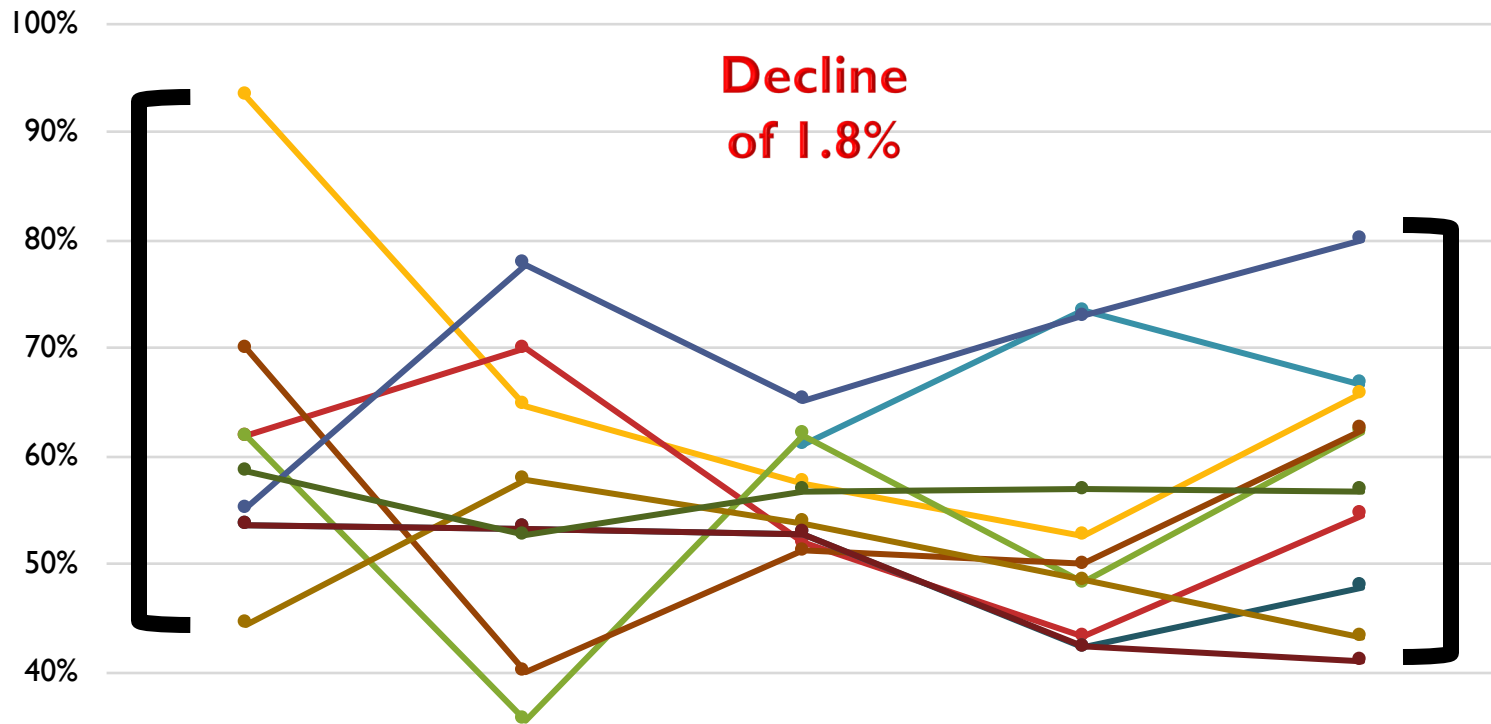


	Winter 14-15	Winter 15-16	Winter 16-17	Winter 17-18	Winter 18-19
Kindergarten		44.3%	52.9%	63.4%	52.0%
1st Grade	37.4%	36.6%	39.9%	40.6%	52.9%
2nd Grade	29.3%	42.7%	45.3%	44.3%	38.1%
3rd Grade	29.7%	31.6%	39.7%	46.6%	45.4%
4th Grade	27.2%	30.0%	32.4%	37.0%	40.7%
5th Grade	20.6%	31.7%	36.5%	34.3%	36.9%
6th Grade	24.6%	22.4%	25.2%	38.6%	26.8%
7th Grade	31.7%	26.9%	19.3%	35.6%	31.9%
8th Grade	31.3%	26.3%	31.4%	30.3%	31.4%
District	28.1%	30.1%	35.0%	38.6%	38.6%

NWEA MAP Winter Mathematics IEP Conditional Growth Index Percentile by Grade Level



NWEA MAP Winter Mathematics IEP Percent of Students Meeting Growth Targets



	Winter 14-15	Winter 15-16	Winter 16-17	Winter 17-18	Winter 18-19
Kindergarten			61.1%	73.5%	66.7%
1st Grade	93.3%	64.7%	57.5%	52.6%	65.8%
2nd Grade	61.8%	70.0%	52.0%	43.3%	54.5%
3rd Grade	61.8%	35.5%	61.9%	48.3%	62.2%
4th Grade	70.0%	40.0%	51.2%	50.0%	62.5%
5th Grade	55.2%	77.8%	65.2%	72.9%	80.0%
6th Grade	53.6%	53.3%	52.8%	42.3%	47.9%
7th Grade	44.4%	57.8%	53.8%	48.5%	43.2%
8th Grade	53.6%	53.3%	52.8%	42.3%	41.0%
District	58.6%	52.7%	56.8%	56.9%	56.8%



PART II

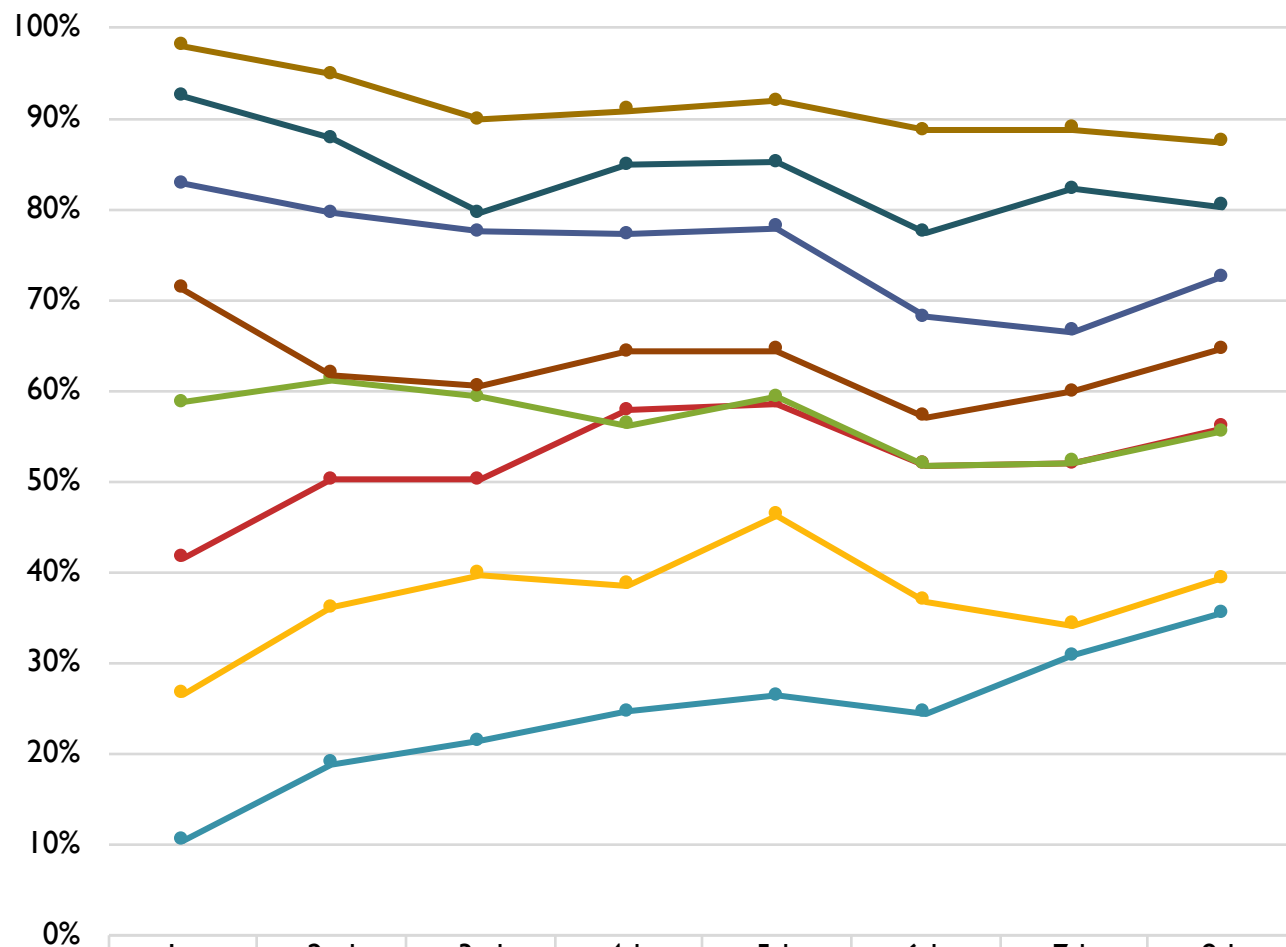
Cohort Data Explained

- When looking at Cohort Data, all students in Kindergarten (or 1st or 2nd) in the given cohort are selected, and then followed throughout their years in District 34.
- Students who have moved in are not counted in this specific data set
- Students who move out are still counted when they were students in D34.



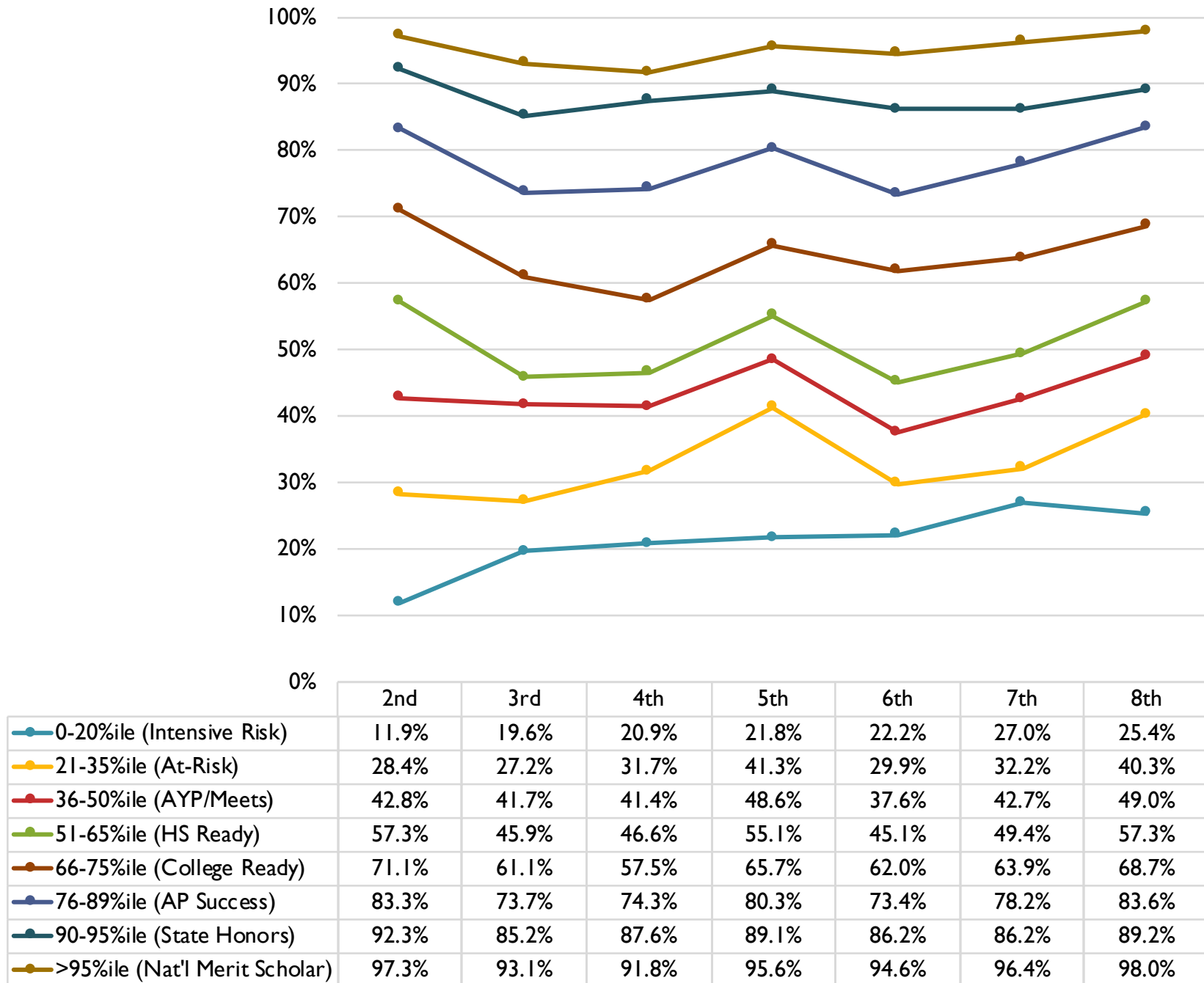
Class of 2019

NWEA MAP Winter Reading Percentile Bands Over Time - Class of 2019

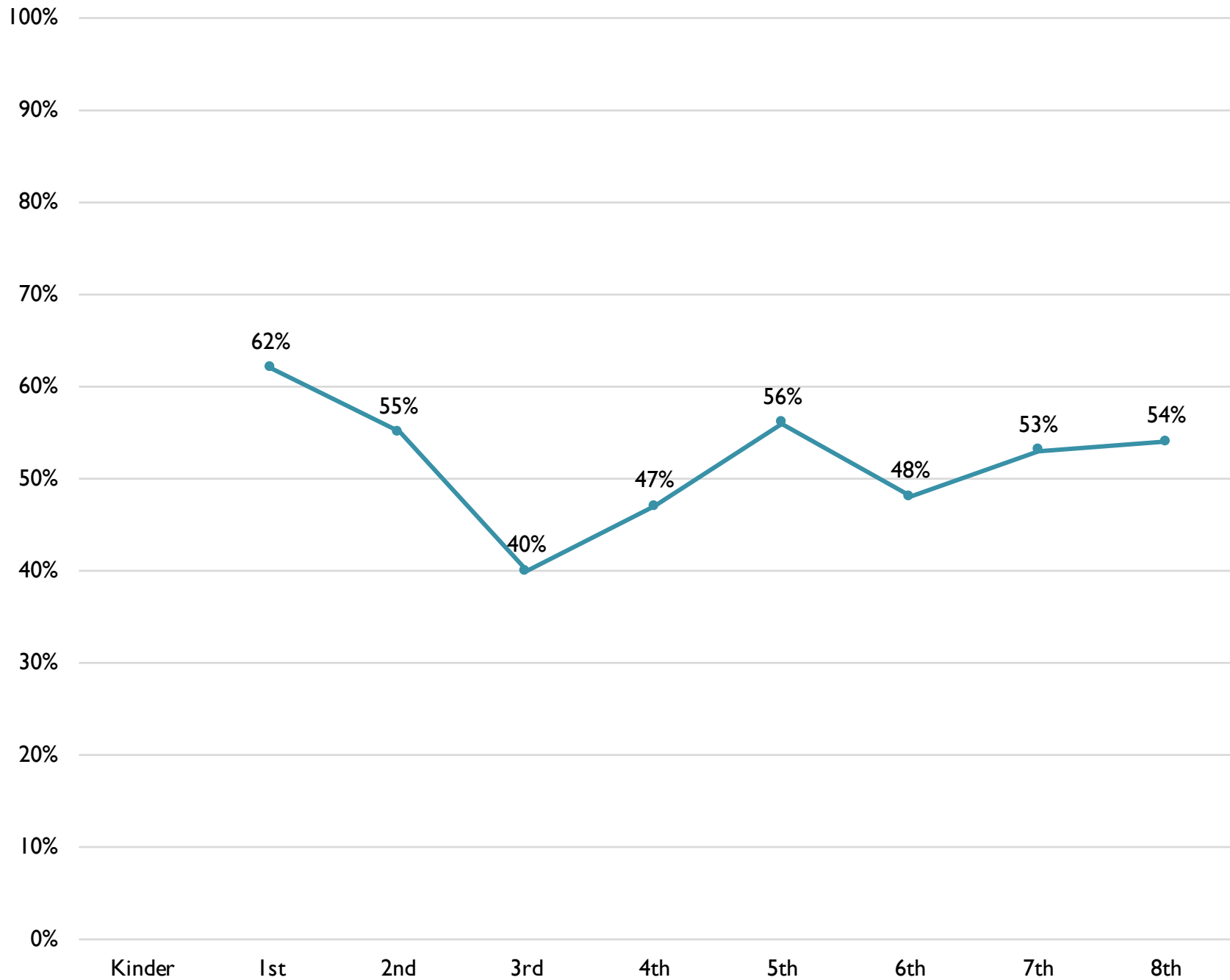


	1st	2nd	3rd	4th	5th	6th	7th	8th
0-20%ile (Intensive Risk)	10.4%	18.9%	21.3%	24.6%	26.3%	24.4%	30.8%	35.5%
21-35%ile (At-Risk)	26.5%	36.1%	39.7%	38.5%	46.2%	36.8%	34.2%	39.3%
36-50%ile (AYP/Meets)	41.5%	50.2%	50.2%	57.8%	58.5%	51.7%	52.0%	55.9%
51-65%ile (HS Ready)	58.7%	61.1%	59.3%	56.1%	59.3%	51.7%	52.0%	55.4%
66-75%ile (College Ready)	71.1%	61.7%	60.4%	64.3%	64.4%	57.0%	59.8%	64.6%
76-89%ile (AP Success)	82.8%	79.5%	77.5%	77.2%	77.9%	68.0%	66.4%	72.4%
90-95%ile (State Honors)	92.4%	87.8%	79.5%	84.8%	85.1%	77.4%	82.1%	80.3%
>95%ile (Nat'l Merit Scholar)	97.9%	94.8%	89.8%	90.8%	91.9%	88.6%	88.8%	87.3%

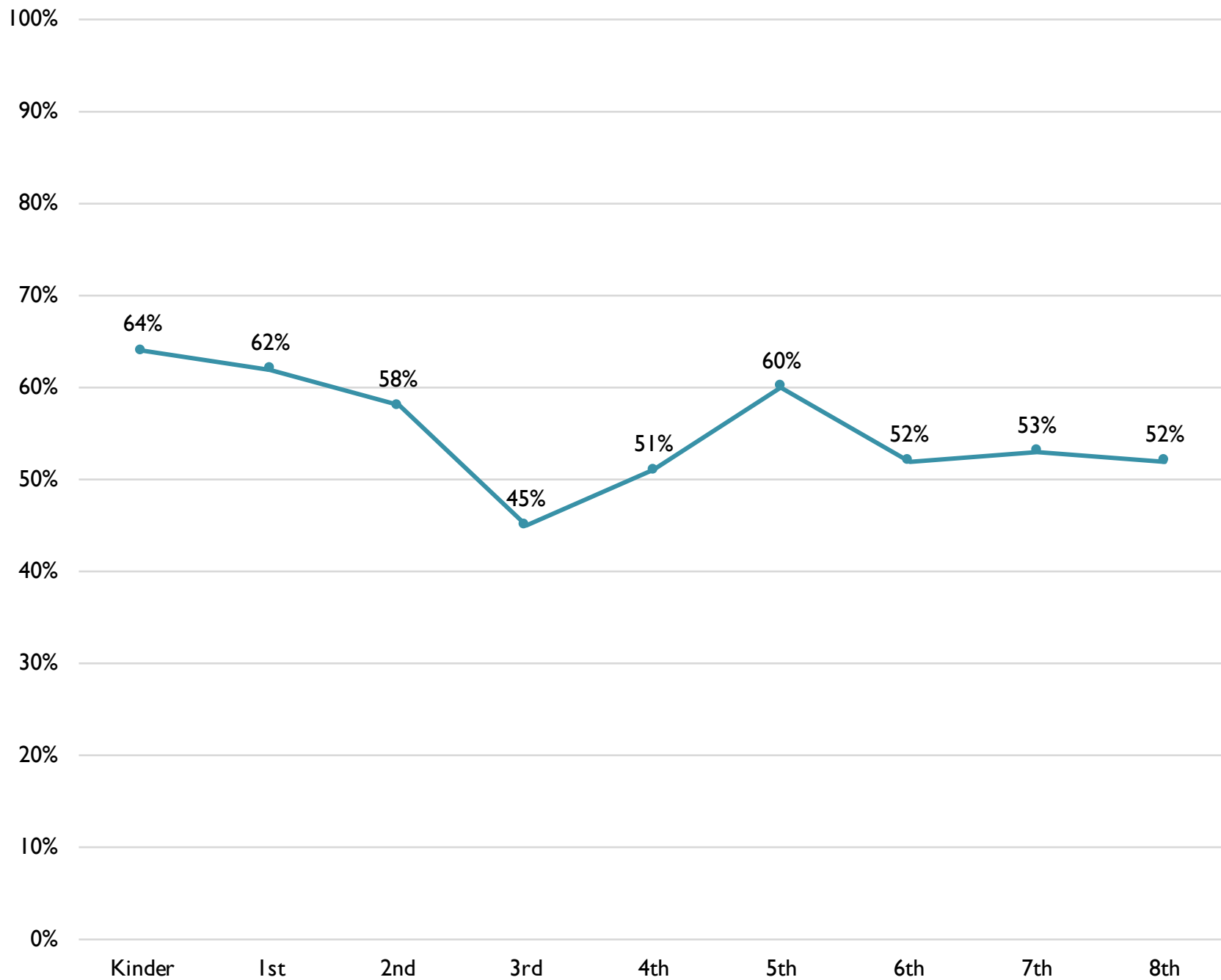
NWEA MAP Winter Mathematics Percentile Bands Over Time - Class of 2019



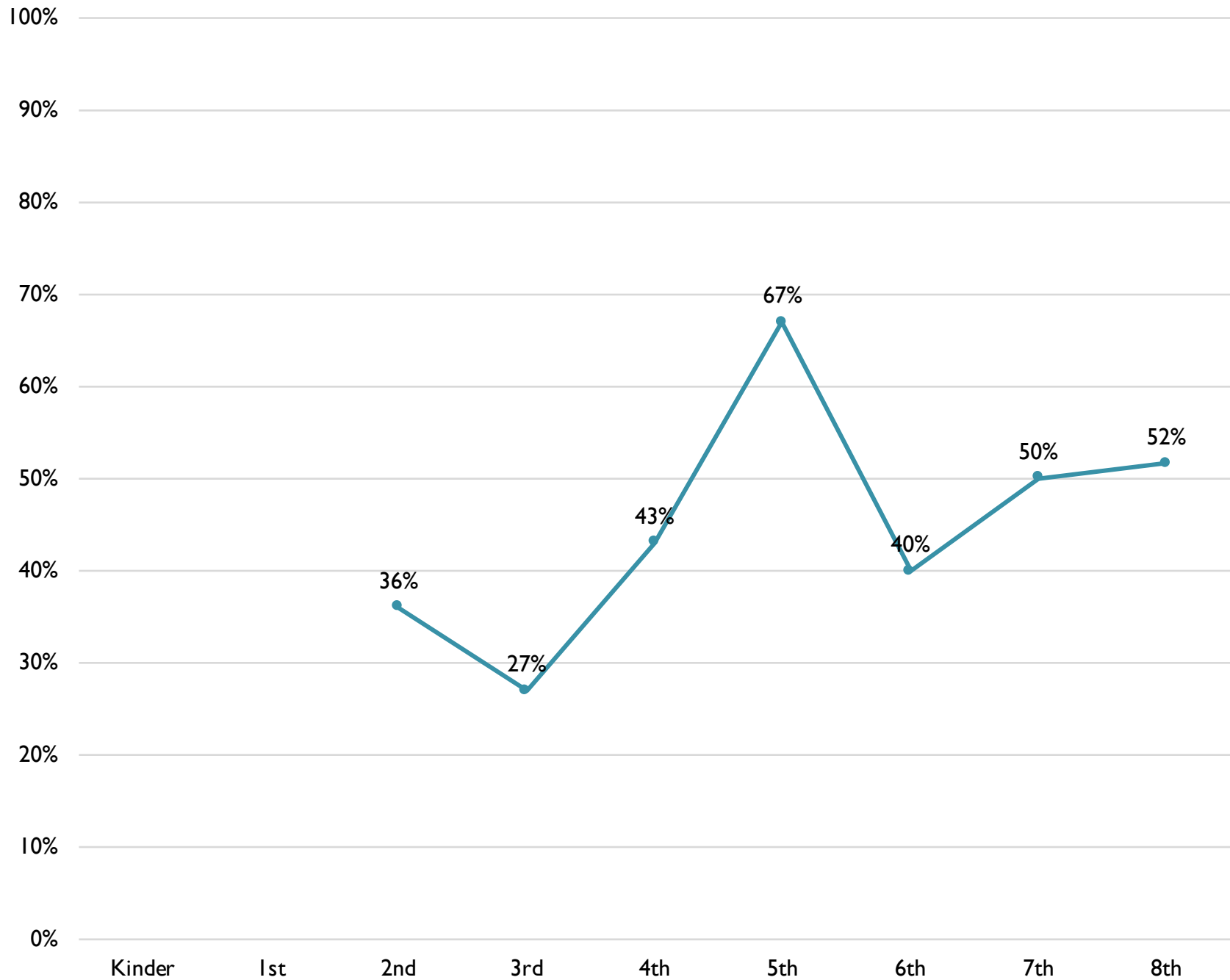
Class of 2019 - NWEA Winter Reading - Median CGI Percentile



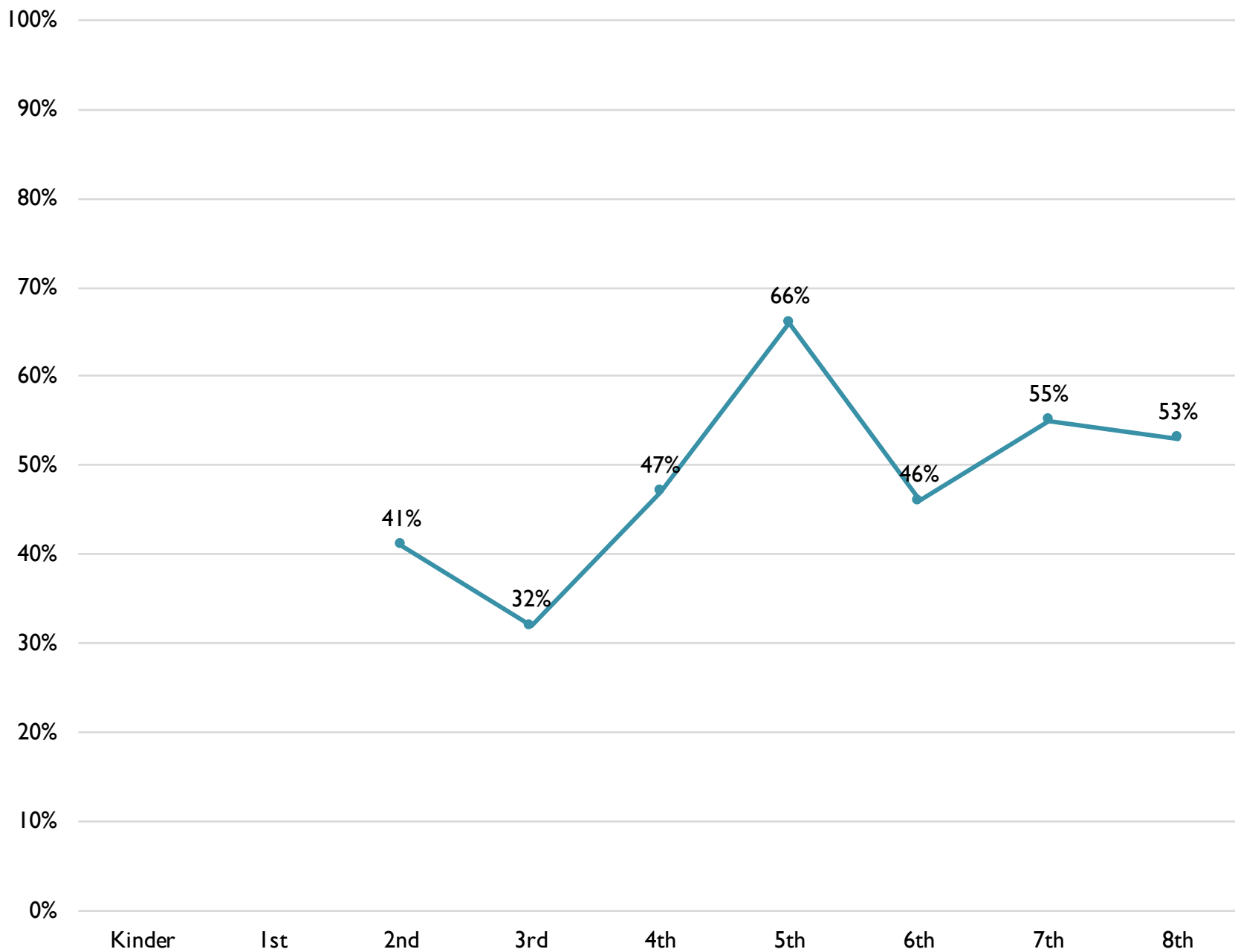
Class of 2019 - NWEA Winter Reading - Percent Meeting Growth



Class of 2019 - NWEA Winter Mathematics - Median CGI Percentile



Class of 2019 - NWEA Winter Mathematics - Percent Meeting Growth



Summary

- District 34 students' distribution of percentiles on the Winter NWEA Assessment has increased in both Reading (0.3%) and Mathematics (12.4%) over the past 5 years, but more significantly in Mathematics [66%ile and above].
- Percent of Students meeting Winter NWEA Growth Targets have decreased in Reading (1.4%) and increased in Mathematics (15.6%) over the past 5 years.
- Conditional Growth Index Percentiles have continued to increase in both Reading and Mathematics over the past 5 years, but more significantly in Mathematics

Continuous Improvement

- Identify strengths in Mathematics and share what is working
- Continue to work with our staff members to analyze and utilize the data to make educational decisions for our students (SLT & BLT).
- Use the Data Analysis Protocol that was developed with the guidance of our NWEA Coach.
- Dig Deeper into our 8th grade ELA data, 6th grade ELA (IEP) data, and data of students in our Gifted program (ELA).
- Begin ELA adoption cycle – recruit committee, plan dates for 2019-2020



ANTIOCH SCHOOL DISTRICT 34

Inspiring personal excellence.

Questions & Comments?

Thank You!